

REFERENCE PLAN OF PART OF LOT A SECTION 20 TOWNSHIP 26
OSOYOOS DIVISION YALE DISTRICT PLAN EPP35751

PLAN EPP153338

PURSUANT TO SECTION 107 OF THE LAND TITLE ACT
FOR ROAD DEDICATION PURPOSES
BOOK 8062883



The intended plot size of this plan is shown in white by
300mm in height 10 inch when plotted at a scale of 1:400
(At distance on a meter.)

LEGEND

- ◆ denotes Standard Iron post (Type 2) found
- denotes Standard Iron post (Type 2) placed
- ⊙ denotes Central Monument found
- ⊙ denotes setting found
- ⊙ denotes witness

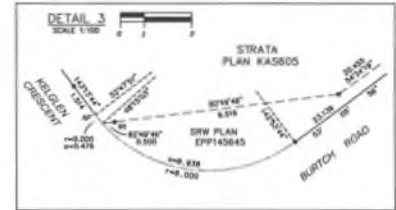
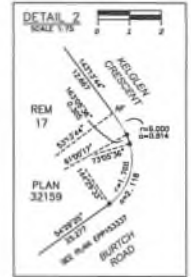
Note: This plan shows only those witness posts
which are 100 mm or more in diameter.

This plan has been
Registered Survey Map No. 4 City of Kelowna
BOOK 120554 422823

Old bearings are defined from 1922 observation and
are referred to the original number of LTR Zone 11.

The LTR coordinates and azimuthal azimuth accuracy
obtained are defined from the 1922 survey and
to provide control measurements 1940 and 2002.

This plan shows horizontal ground-line distances which
reference specified to compare with distances, within
ground-line distances by the combined factor of
1:100000 which has been derived from possible
control measurement 1922.



8445
LTR Zone 11 coordinate
Datum: NAD83(CSRS) 4.0.0.001
UTM easting: 52250.884
UTM northing: 52250.883
Estimated Absolute Accuracy: 0.02m

8445
LTR Zone 11 coordinate
Datum: NAD83(CSRS) 4.0.0.001
UTM easting: 52250.884
UTM northing: 52250.883
Estimated Absolute Accuracy: 0.02m

RUNNALLS DENBY
british columbia land surveyors
2384 Louisa Avenue
Kelowna, B.C. Phone: (250) 862-1122
V1Y 8L2 Email: info@runnallsdenby.com
Sole Inc: 18888 Road 2 F.L.S. 18888

This plan has been
Registered Survey Map No. 4 City of Kelowna
BOOK 120554 422823
This plan has been within the jurisdiction of the Assessor Office
for the City of Kelowna
The field survey represented by this plan was completed on
the 22nd day of May, 2025.
Jennifer Ashton, B.C.L.S. 884

